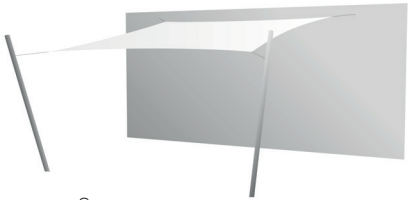


MODELS



Triangle



Square

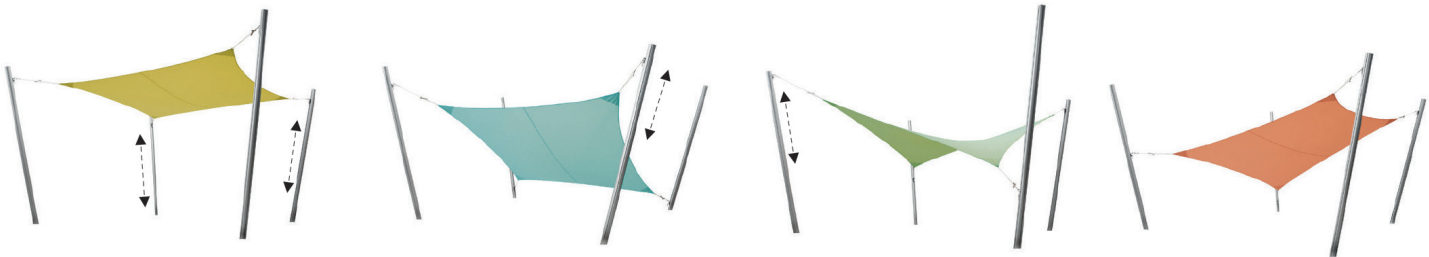


Rectangle



Penta

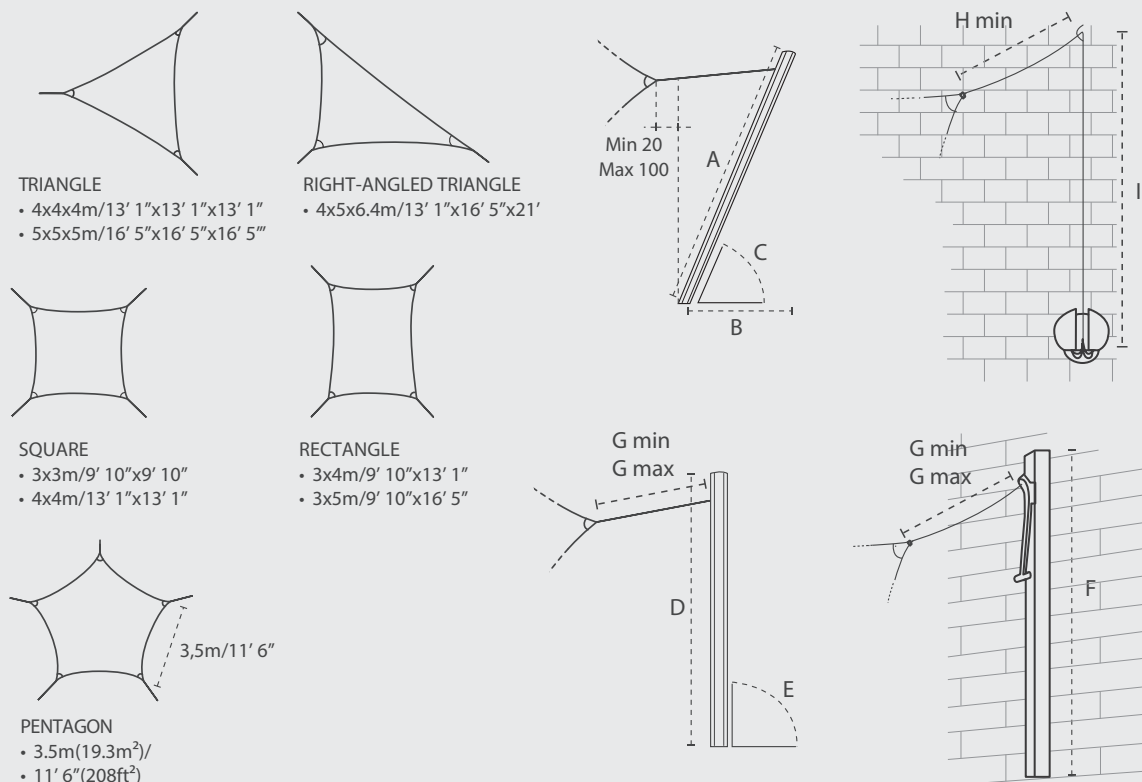
POSITIONS



COLORS

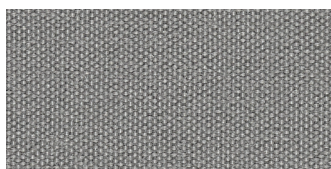
	Alba	Roma	Taupe	Stonegrey	Mandarine	Red	Terra	Sunflower	Camel	Mint	Nero
PREMIUM											
LIMITED									Please contact Umbrosa for more limited (Sunbrella) colors.		
	Canvas	Taupe	Granite	Orange	Paris Red	Snow	Lagoon	Olive			
AIRTEX											
	White										
SUNVISION											
		Ecru	Granite								

## DIMENSIONS



+/- 2% F-----I	A cm/ft	B cm/ft	C	D cm/ft	E	F cm/ft	G min cm/ft	G max cm/ft	H cm/inch	H+I cm/ft
INGENUA	260/8' 7" 300/9' 10"	65/2' 1.6" 75/2' 5.5"	80°	260/8' 7"	90°	165/5' 5"	50/1' 8"	150/4' 11"	20/8"	<500/<16' 5"

## MATERIALS



### FABRIC

Limited – 100% Sunbrella –  
Acryl 260 gr/m²\*  
Premium – Olefine 190 gr/m²  
Sunvision – Acrylic 275 gr/ m²  
Airtex – Acrylic 249 gr/ m²  
More details – see spec sheet Fabrics



### POLE

Aluminum - Naturally anodized.  
White - RAL 9016 TEC  
Black - RAL 9005 TD

### OTHER MATERIALS

Carabiner: stainless steel  
Handle: stainless steel 316 (casted & polished)  
Rope: Ø 6mm/0,24"



\* recommended for use outside of Europe

For projects – consult Umbrosa for powder coating finish options (RAL).

## PACKAGING &amp; TRANSPORT

Ingenua	L (cm)	W (cm)	H (cm)	Weight (kg)	L (")	W (")	H (")	Weight (lbs)
Box pole	270	10	8,5	7,3	8'10"	4"	3"	16
Bag Sail	45	55	16	2,23 - 5,26	1'5"	1'10"	6"	5-11

## NICE TO KNOW

- Spare parts available
- Designed and manufactured in Belgium
- Warranty between 15 and 2 years, see Warranty Sheet
- Manual included
- Storage bag included (PU coated fabric)
- Wind speeds up to 6 beaufort, 50 km/h, 31 mph when base is permanently fixed
- Tested at TU Delft